

# FertilityCare Practitioner Education Program

**CREIGHTON MODEL FertilityCare™ System: An Authentic Language of a Woman's Health and Fertility**

**Albuquerque,  
New Mexico**

**Education Phase I:**

**July 5-12, 2025**

**Education Phase II:**

**February 7-12, 2026**

For information  
& an application,  
contact

Angélique García, BSE, CFCP,  
CFCE, Director  
[angel@stjosephfertilitycare.org](mailto:angel@stjosephfertilitycare.org)

or  
01 (505) 263-3509

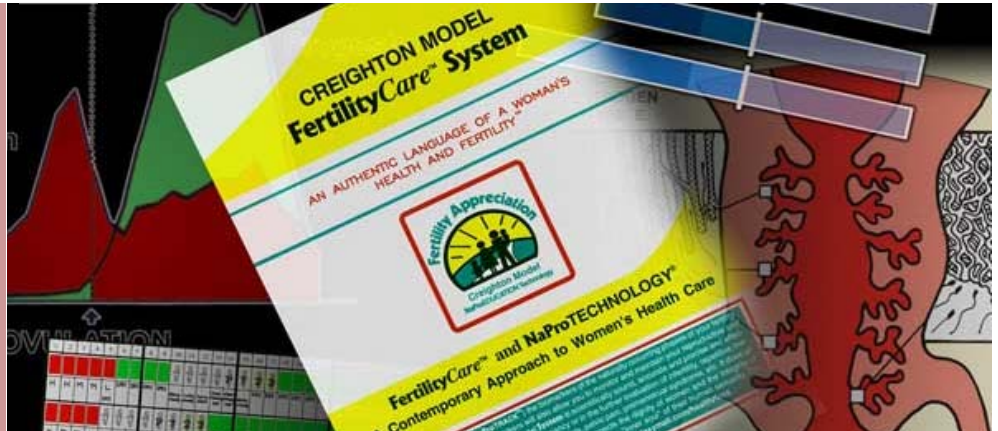
**ACCEPTING APPLICATIONS  
NOW**

**Application deadline  
June 1, 2025**

**Hosted by:**

**St. Joseph FertilityCare Center**  
The Catholic Center  
4000 St. Joseph Dr. NW  
Albuquerque, NM 87120

Internationally Accredited by the



## Teach the CREIGHTON MODEL FertilityCare™ System

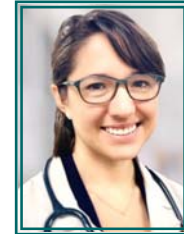
- Work to create a Culture of Life, according to the teachings of St. Pope John Paul II's Theology of the Body.
- Assist couples to manage all of their family planning, & gynecologic health with a highly effective system, completely consistent with Catholic teaching.
- Assist couples with infertility to achieve pregnancy, through the FertilityCare™ System, in cooperation with Medical Consultants practicing the NEW reproductive science of NaProTECHNOLOGY®.
- Help couples understand the gifts of sexuality and fertility.
- Assist infertile couples to achieve pregnancy with a system that is natural, restorative, and cooperative.



Angélique N. García, BSE,  
CFCP, CFCE, Director,  
Albuquerque, NM



Leslie Esquibel  
BSIE, CFCP, CFCE  
Los Alamos, NM



Ashlee Holguin, PA-C,  
CFCE  
Albuquerque, NM

St. Joseph FertilityCare Center, Albuquerque, New Mexico, USA  
Internationally Accredited by the **American Academy of FertilityCare Professionals**  
Affiliated with **FertilityCare Centers of America**